

# Heaven and Earth Designs

## Little Puppy

Chart No: HAEZIN 15877

Chart Design by Michele Sayetta

Copyrighted Artwork Zindy S. D. Nielsen



Finished Design Size 450 W by 316 H (18 WX 12-5/8 H inches on 25ct)

(This Chart Contains 14 colors)

Heaven and Earth Designs Inc.

89198 Easy Way Road

Seaside Oregon 97138

320-214-7998

<http://www.heavenandearthdesigns.com>

Copyright Heaven and Earth Designs 2013

**TM/© 2013 Zindy S. D. Nielsen**

**<http://zindy-zone.dk/>**

Congratulations on buying a **Heaven and Earth Designs LLC** Cross Stitch Chart .

We know it will bring you many hours of pleasurable stitching and believe the final result will be something to love and admire forever.

Included with your chart is a clear plastic bag to protect your chart, and a coded thread list for the threads you will need to complete your project. Our charts are designed to use DMC stranded cotton threads and, where appropriate, Kreinik metallic thread.

#### **Chart Instructions:**

1. This chart is made up of several numbered pages beginning at the top left corner of the first page. The pages of chart are laid out from left to right in rows e.g. 1 2 3 4, 5 6 7 8. Although each chart is marked with arrows which indicate the centre , we believe you will find it easier to begin from the top left corner of page 1 and follow the chart page by page to the bottom right corner of the last page.
2. We recommend you stitch your design on either 18 count Aida or 25 count Linen. using 2 strands of cotton over one in each case.
3. At the top of the thread list you will find our recommendation for the fabric colour. We recommend purchasing a piece of fabric that equates to the design size plus 3 inches [75mm] all around, to allow for framing and matting.
4. Because of the large number of stitches, we have found it to be easier if you stitch one 10X10 grid at a time and then continue on to the next 10 x 10 grid.
5. Stitch each page until it is completed and then move on to the next. On each page there is a number at the top left that indicates the page number. On each corner is a number in parenthesis that indicates the connecting page, unless there is not one.
6. Under International Copyright Laws, you may copy the chart for your own use. We recommend that you use a copy as your working document. You may also wish to enlarge the pages to make the symbols easier to read.

**If you have any questions regarding this chart please feel free to contact us.**















Heaven and Earth Designs LLC

320-214-7998

<http://www.heavenandearthdesigns.com>

**Pattern Name:** Little Puppy-Neilsen  
**Designed By:** Michele Sayetta  
**Company:** Heaven and Earth Designs Inc.  
**Copyright:** 2013 Zindy Neilsen ®  
**Fabric:** Linen 25, White  
 450w X 316h Stitches  
**Size:** 25 Count, 18w X 12-5/8h in

### Floss Used for Full Stitches:

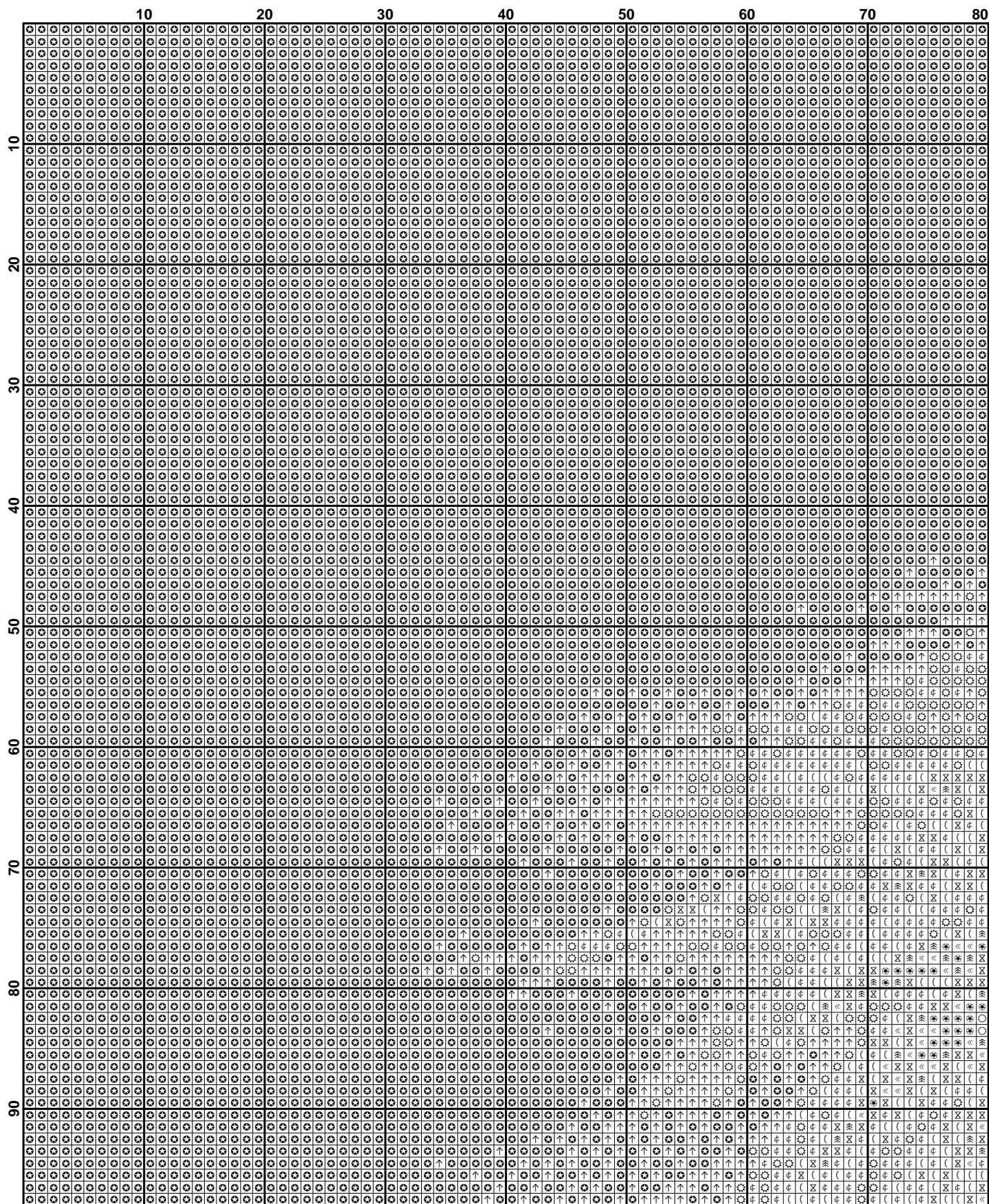
Symbol	Strands	Type	Number	Color
	2	DMC	1	White
	2	DMC	169	Pewter-LT
	2	DMC	310	Black
	2	DMC	317	Pewter Gray
	2	DMC	318	Steel Gray-LT
	2	DMC	413	Pewter Gray-DK
	2	DMC	414	Steel Gray-DK
	2	DMC	415	Pearl Gray
	2	DMC	535	Ash Gray-VYLT
	2	DMC	647	Beaver Gray-MD
	2	DMC	648	Beaver Gray-LT
	2	DMC	762	Pearl Gray-VYLT
	2	DMC	3072	Beaver Gray-VYLT
	2	DMC	3799	Pewter Gray-VYDK

## Usage Summary

Strands Per Skein: 6

Skein Length: 313.0 in

Type	Number	Full	Half	Quarter	Petite	Back(in)	Str(in)	Spec(in)	French	Bead	Skein Est.
□ DMC	1	11208	0	0	0	0.0	0.0	0.0	0	0	4.000
■ DMC	169	7553	0	0	0	0.0	0.0	0.0	0	0	3.000
■ DMC	310	12295	0	0	0	0.0	0.0	0.0	0	0	4.000
■ DMC	317	10651	0	0	0	0.0	0.0	0.0	0	0	3.000
■ DMC	318	12755	0	0	0	0.0	0.0	0.0	0	0	4.000
■ DMC	413	5228	0	0	0	0.0	0.0	0.0	0	0	2.000
■ DMC	414	10529	0	0	0	0.0	0.0	0.0	0	0	3.000
■ DMC	415	17491	0	0	0	0.0	0.0	0.0	0	0	5.000
■ DMC	535	3536	0	0	0	0.0	0.0	0.0	0	0	1.000
■ DMC	647	4158	0	0	0	0.0	0.0	0.0	0	0	2.000
■ DMC	648	10495	0	0	0	0.0	0.0	0.0	0	0	3.000
■ DMC	762	13480	0	0	0	0.0	0.0	0.0	0	0	4.000
■ DMC	3072	15216	0	0	0	0.0	0.0	0.0	0	0	5.000
■ DMC	3799	7605	0	0	0	0.0	0.0	0.0	0	0	3.000

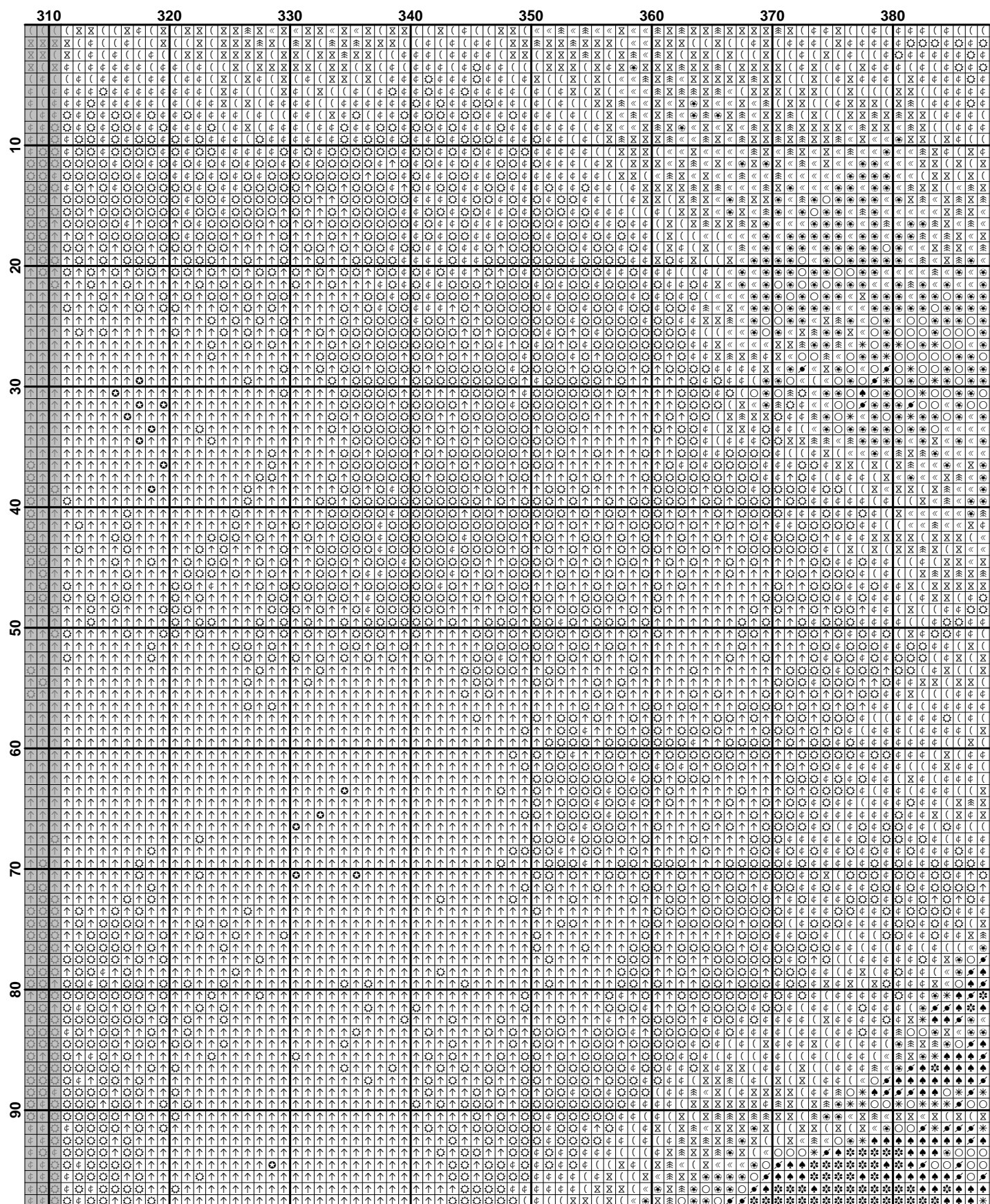


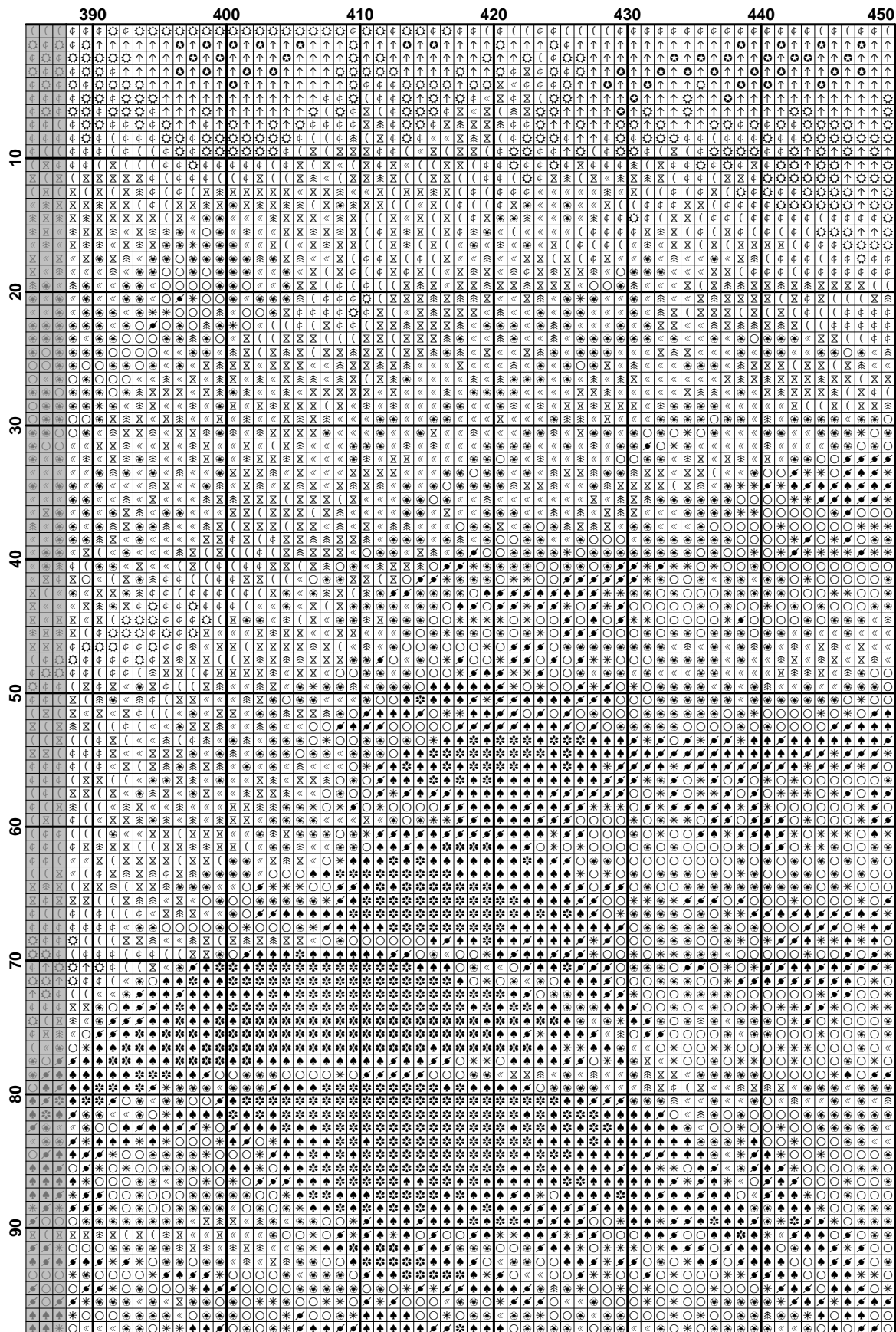
	80	90	100	110	120	130	140	150
10	...	...	...	...	...	...	...	...
20	...	...	...	...	...	...	...	...
30	...	...	...	...	...	...	...	...
40	...	...	...	...	...	...	...	...
50	...	...	...	...	...	...	...	...
60	...	...	...	...	...	...	...	...
70	...	...	...	...	...	...	...	...
80	...	...	...	...	...	...	...	...
90	...	...	...	...	...	...	...	...

[illegible]

[illegible]

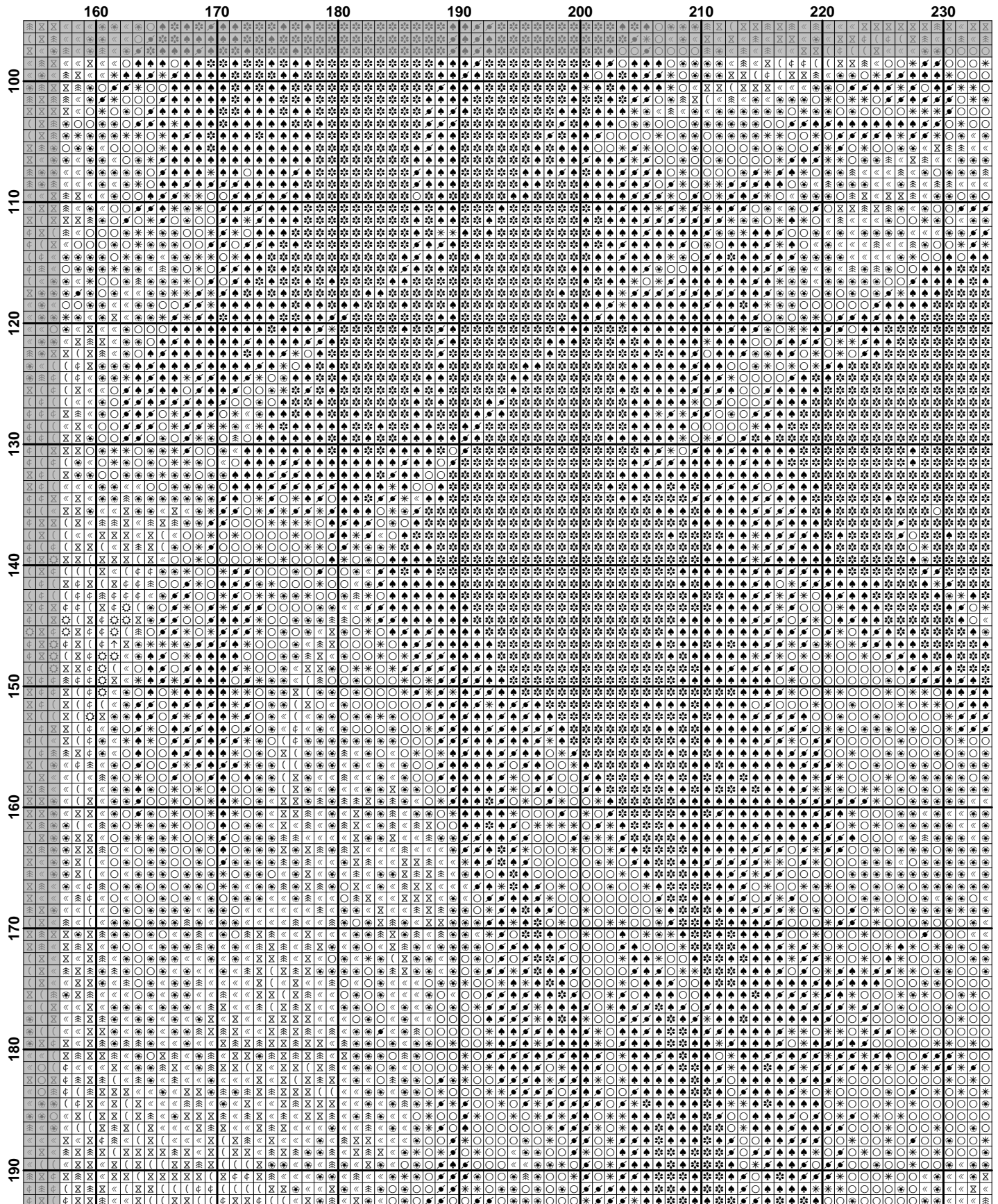




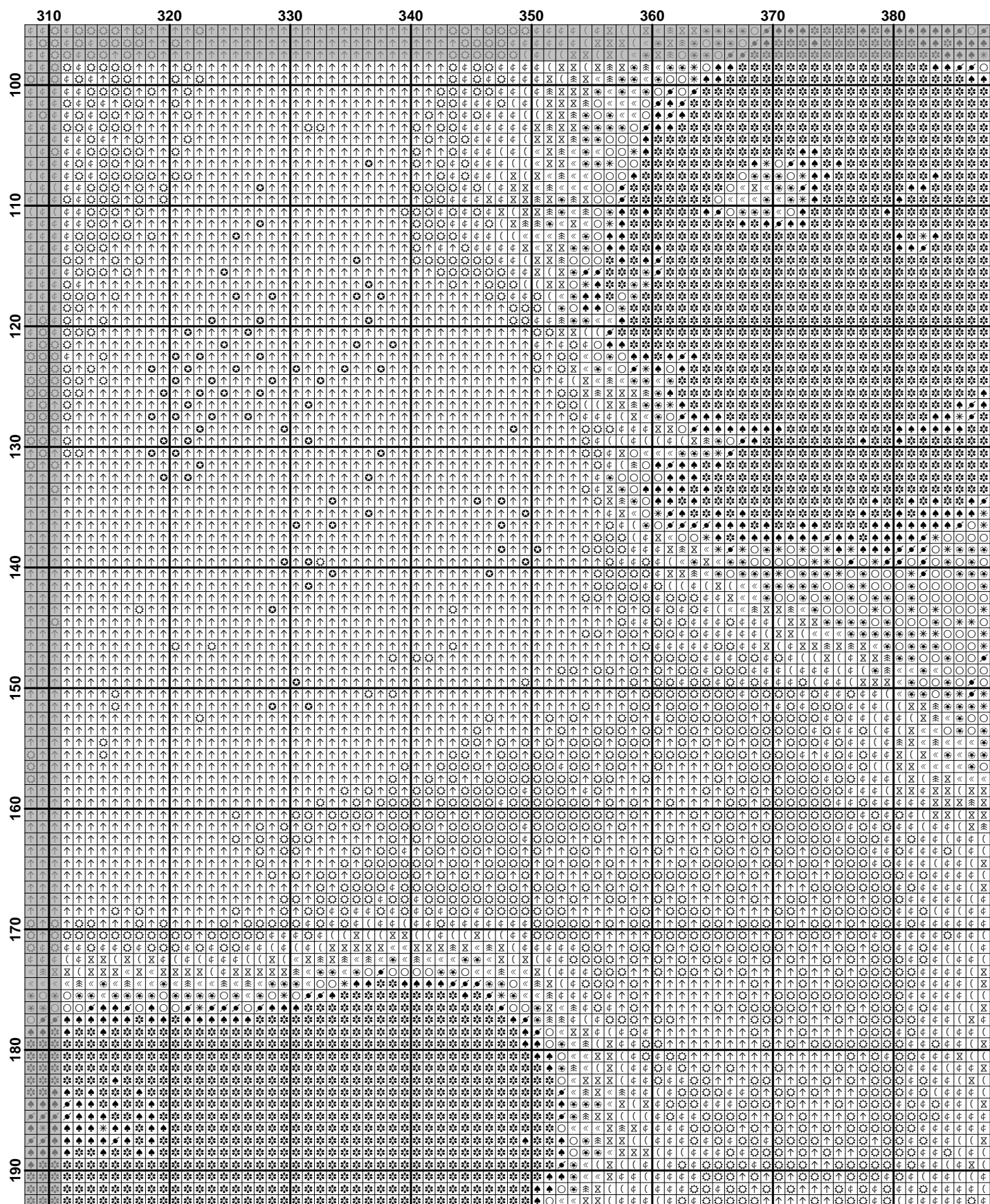


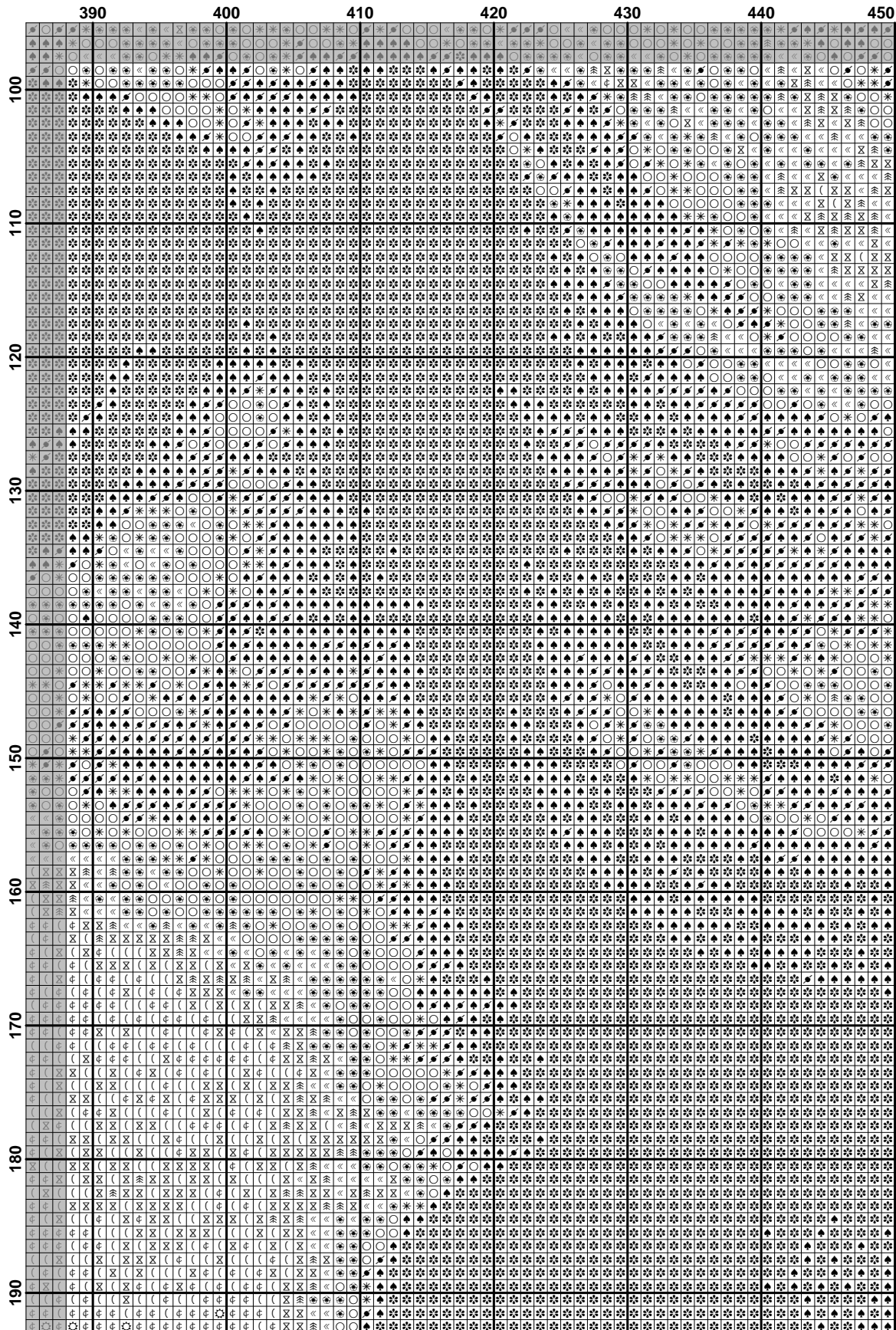
	10	20	30	40	50	60	70	80
100								
110								
120								
130								
140								
150								
160								
170								
180								
190								

	80	90	100	110	120	130	140	150
100								
110								
120								
130								
140								
150								
160								
170								
180								
190								



	240	250	260	270	280	290	300	310
100	X	X	X	X	X	X	X	X
101	X	X	X	X	X	X	X	X
102	X	X	X	X	X	X	X	X
103	X	X	X	X	X	X	X	X
104	X	X	X	X	X	X	X	X
105	X	X	X	X	X	X	X	X
106	X	X	X	X	X	X	X	X
107	X	X	X	X	X	X	X	X
108	X	X	X	X	X	X	X	X
109	X	X	X	X	X	X	X	X
110	X	X	X	X	X	X	X	X
111	X	X	X	X	X	X	X	X
112	X	X	X	X	X	X	X	X
113	X	X	X	X	X	X	X	X
114	X	X	X	X	X	X	X	X
115	X	X	X	X	X	X	X	X
116	X	X	X	X	X	X	X	X
117	X	X	X	X	X	X	X	X
118	X	X	X	X	X	X	X	X
119	X	X	X	X	X	X	X	X
120	X	X	X	X	X	X	X	X
121	X	X	X	X	X	X	X	X
122	X	X	X	X	X	X	X	X
123	X	X	X	X	X	X	X	X
124	X	X	X	X	X	X	X	X
125	X	X	X	X	X	X	X	X
126	X	X	X	X	X	X	X	X
127	X	X	X	X	X	X	X	X
128	X	X	X	X	X	X	X	X
129	X	X	X	X	X	X	X	X
130	X	X	X	X	X	X	X	X
131	X	X	X	X	X	X	X	X
132	X	X	X	X	X	X	X	X
133	X	X	X	X	X	X	X	X
134	X	X	X	X	X	X	X	X
135	X	X	X	X	X	X	X	X
136	X	X	X	X	X	X	X	X
137	X	X	X	X	X	X	X	X
138	X	X	X	X	X	X	X	X
139	X	X	X	X	X	X	X	X
140	X	X	X	X	X	X	X	X
141	X	X	X	X	X	X	X	X
142	X	X	X	X	X	X	X	X
143	X	X	X	X	X	X	X	X
144	X	X	X	X	X	X	X	X
145	X	X	X	X	X	X	X	X
146	X	X	X	X	X	X	X	X
147	X	X	X	X	X	X	X	X
148	X	X	X	X	X	X	X	X
149	X	X	X	X	X	X	X	X
150	X	X	X	X	X	X	X	X
151	X	X	X	X	X	X	X	X
152	X	X	X	X	X	X	X	X
153	X	X	X	X	X	X	X	X
154	X	X	X	X	X	X	X	X
155	X	X	X	X	X	X	X	X
156	X	X	X	X	X	X	X	X
157	X	X	X	X	X	X	X	X
158	X	X	X	X	X	X	X	X
159	X	X	X	X	X	X	X	X
160	X	X	X	X	X	X	X	X
161	X	X	X	X	X	X	X	X
162	X	X	X	X	X	X	X	X
163	X	X	X	X	X	X	X	X
164	X	X	X	X	X	X	X	X
165	X	X	X	X	X	X	X	X
166	X	X	X	X	X	X	X	X
167	X	X	X	X	X	X	X	X
168	X	X	X	X	X	X	X	X
169	X	X	X	X	X	X	X	X
170	X	X	X	X	X	X	X	X
171	X	X	X	X	X	X	X	X
172	X	X	X	X	X	X	X	X
173	X	X	X	X	X	X	X	X
174	X	X	X	X	X	X	X	X
175	X	X	X	X	X	X	X	X
176	X	X	X	X	X	X	X	X
177	X	X	X	X	X	X	X	X
178	X	X	X	X	X	X	X	X
179	X	X	X	X	X	X	X	X
180	X	X	X	X	X	X	X	X
181	X	X	X	X	X	X	X	X
182	X	X	X	X	X	X	X	X
183	X	X	X	X	X	X	X	X
184	X	X	X	X	X	X	X	X
185	X	X	X	X	X	X	X	X
186	X	X	X	X	X	X	X	X
187	X	X	X	X	X	X	X	X
188	X	X	X	X	X	X	X	X
189	X	X	X	X	X	X	X	X
190	X	X	X	X	X	X	X	X





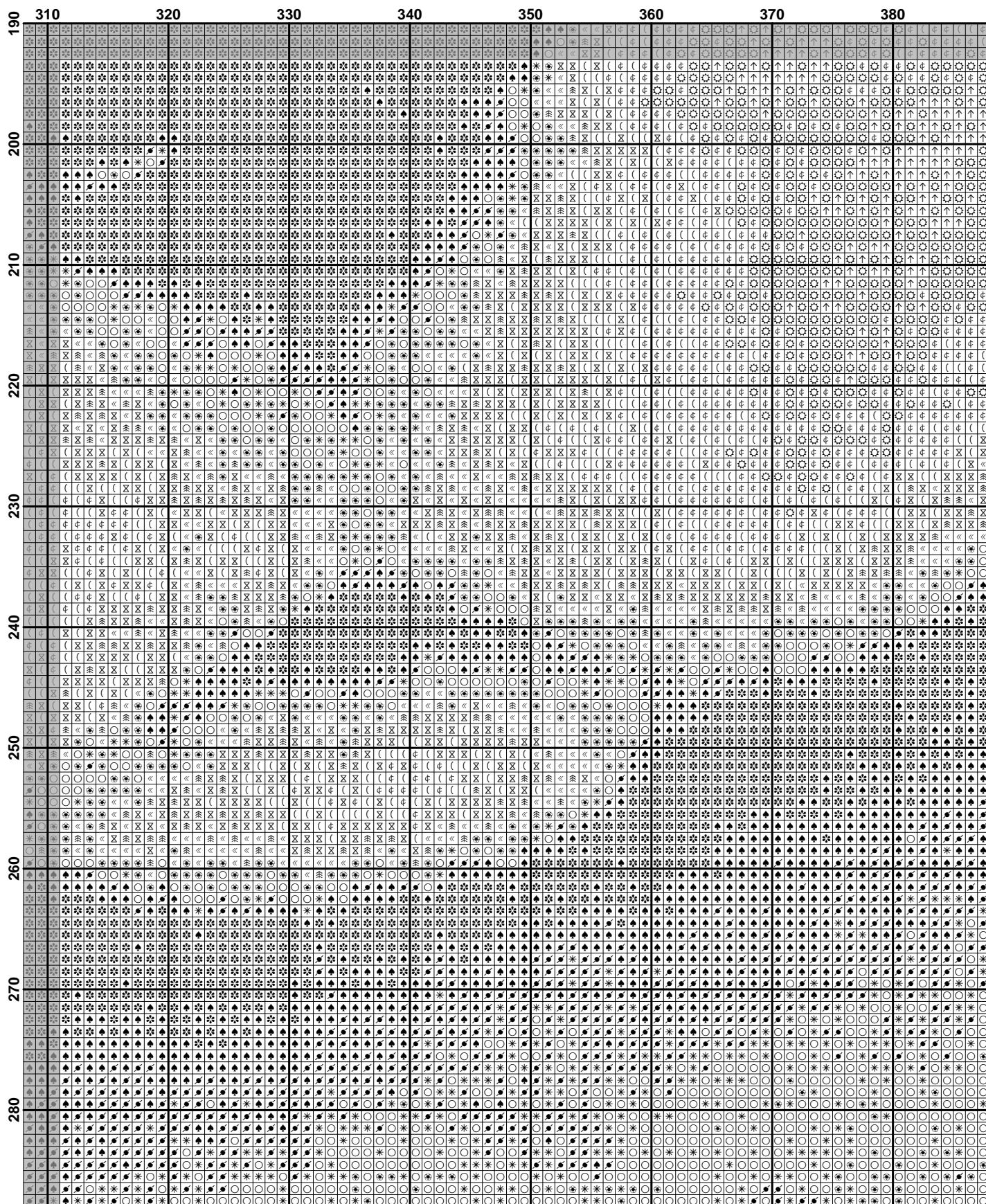


	10	20	30	40	50	60	70	80
190								
191								
192								
193								
194								
195								
196								
197								
198								
199								
200								
201								
202								
203								
204								
205								
206								
207								
208								
209								
210								
211								
212								
213								
214								
215								
216								
217								
218								
219								
220								
221								
222								
223								
224								
225								
226								
227								
228								
229								
230								
231								
232								
233								
234								
235								
236								
237								
238								
239								
240								
241								
242								
243								
244								
245								
246								
247								
248								
249								
250								
251								
252								
253								
254								
255								
256								
257								
258								
259								
260								
261								
262								
263								
264								
265								
266								
267								
268								
269								
270								
271								
272								
273								
274								
275								
276								
277								
278								
279								
280								

	80	90	100	110	120	130	140	150
190	X	X	X	X	X	X	X	X
200	X	X	X	X	X	X	X	X
210	X	X	X	X	X	X	X	X
220	X	X	X	X	X	X	X	X
230	X	X	X	X	X	X	X	X
240	X	X	X	X	X	X	X	X
250	X	X	X	X	X	X	X	X
260	X	X	X	X	X	X	X	X
270	X	X	X	X	X	X	X	X
280	X	X	X	X	X	X	X	X

	160	170	180	190	200	210	220	230
190	⬆	⬆	⬆	⬆	⬆	⬆	⬆	⬆
200	⬆	⬆	⬆	⬆	⬆	⬆	⬆	⬆
210	⬆	⬆	⬆	⬆	⬆	⬆	⬆	⬆
220	⬆	⬆	⬆	⬆	⬆	⬆	⬆	⬆
230	⬆	⬆	⬆	⬆	⬆	⬆	⬆	⬆
240	⬆	⬆	⬆	⬆	⬆	⬆	⬆	⬆
250	⬆	⬆	⬆	⬆	⬆	⬆	⬆	⬆
260	⬆	⬆	⬆	⬆	⬆	⬆	⬆	⬆
270	⬆	⬆	⬆	⬆	⬆	⬆	⬆	⬆
280	⬆	⬆	⬆	⬆	⬆	⬆	⬆	⬆

	240	250	260	270	280	290	300	310
190								
200								
210								
220								
230								
240								
250								
260								
270								
280								



	390	400	410	420	430	440	450
190							
200							
210							
220							
230							
240							
250							
260							
270							
280							

[illegible]

[illegible]



[illegible]

The figure displays a 10x100 grid of small images, each showing a unique pattern of black and white dots. The columns are labeled with numbers 240, 250, 260, 270, 280, 290, 300, and 310. The rows are labeled with numbers 290, 300, and 310. The patterns of dots vary across both rows and columns, suggesting a complex relationship between the row and column indices and the resulting dot patterns.

Figure 1 is a 10x10 grid of 100 small plots. The y-axis is labeled with site numbers 290, 300, and 310. The x-axis is labeled with species numbers 310, 320, 330, 340, 350, 360, 370, and 380. Each plot contains a grid of points, some of which are filled with a pattern of asterisks and circles, representing the spatial distribution of species. The patterns vary across the grid, with some plots showing a clear trend of increasing species richness with increasing site number, and others showing a more random or clustered distribution.

	390										400										410										420										430										440										450																																																																																																																																																																																																																																																																																																																																																																																																																																																
290																																																																																																																																																																																																																																																																																																																																																																																																																																																																																																													